



MYCOTOXINS

Mycospin™ 400

Multitoxin Spin Column

in combination with ¹³C isotope labeled internal standards

Mycospin™ 400 Multitoxin spin column has been developed to be used for all regulated mycotoxins to shorten the time-consuming clean-up process for the simultaneous analysis of multiple mycotoxins.

How Mycospin™ 400 works

The Mycospin™ 400 Multitoxin spin column contains a combination of adsorbents that was designed for the purification of complex commodity extracts for subsequent LC-MS/MS multi-mycotoxin analysis. This clean-up column has been studied extensively and application briefs are available.

Application of Mycospin™ 400 in combination with ¹³C isotope labeled internal standards

Highly accurate LC-MS/MS results are achieved by combining the Mycospin™ 400 clean-up with Biopure™ ¹³C isotope labeled standards.

Commodities studied

- Barley
- Corn
- Corn gluten meal
- Dried distillers grains
- Peanuts
- Rice
- Soy
- Wheat

Recovery

- Zearalenone >90 %
- Type A Trichos (T-2, HT-2, Neos, DAS) >90 %
- Type B Trichos (DON, AcDON, FusX, NIV) >90 %
- Total Aflatoxins >90 %
- Ochratoxin A >90 %
- Fumonisin >90 %

Time for clean-up

5 minutes



PRODUCT FEATURES

Saving time

- Only 5 minutes for whole clean-up
- One column for multi-mycotoxins and various commodities

Saving money

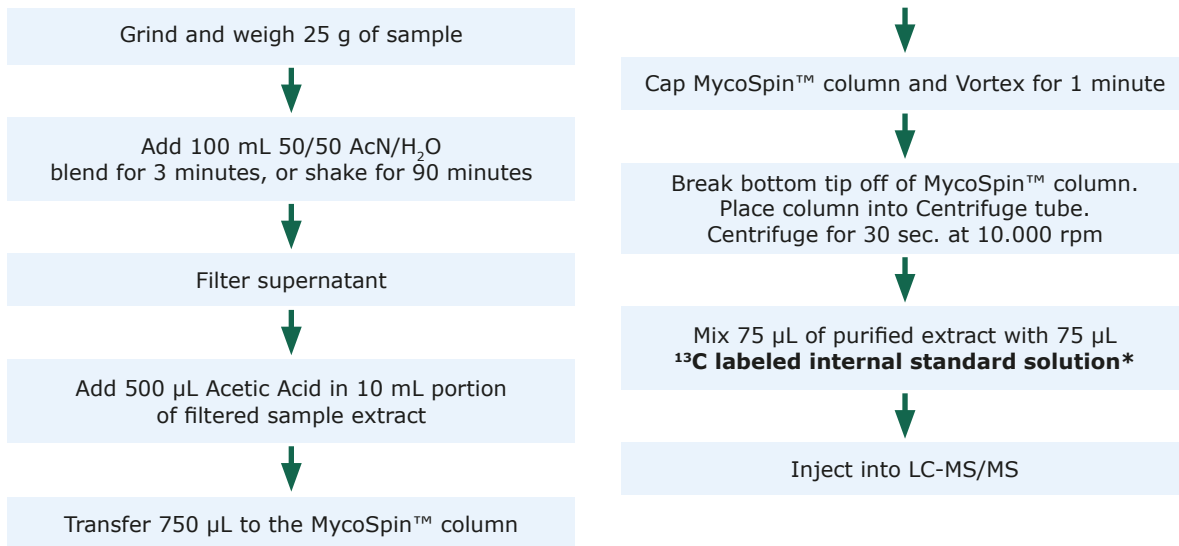
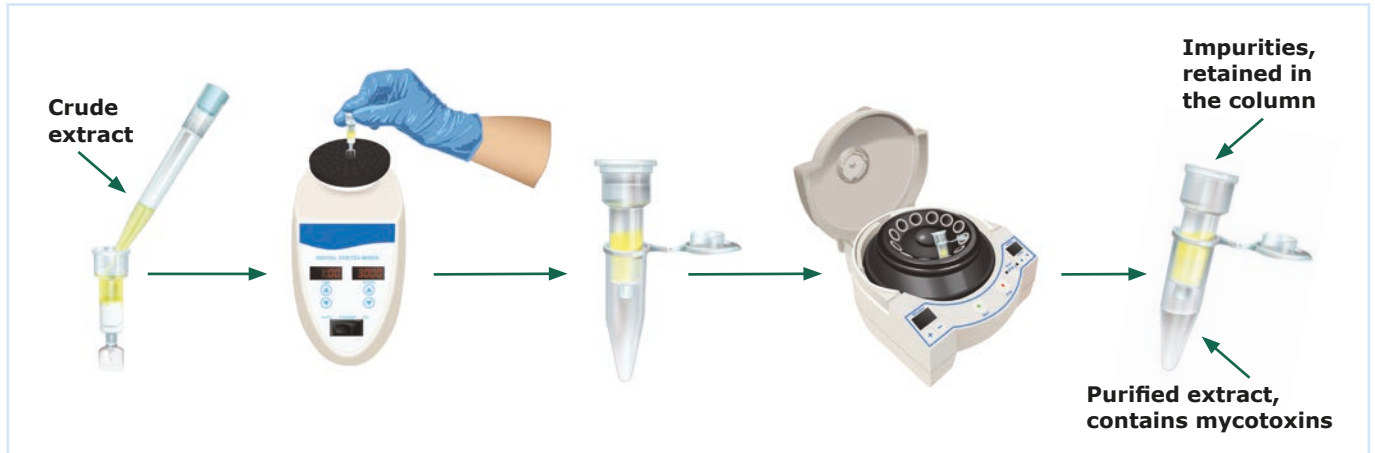
- Mycospin™ protects the LC-MS/MS
- Fewer chemicals/materials needed
- Lower total costs in use
- Best price-performance ratio

Increasing productivity and performance

- Easy to use
- Clear & structured workflow minimizes user errors
- Fewer re-runs
- Improves method sensitivity when combined with ¹³C-labeled standards

MycoSpin™ 400 Multitoxin Spin Column LC-MS/MS sample preparation

Read the Package Insert instructions completely before performing any test.



* For further information regarding internal standards please contact your local Romer Labs support.

Ordering Information – Romer Labs 1-step clean-up columns

Product	Description	Item Number
MycoSpin™ 400 Multitoxin	Box of 25	10001961

